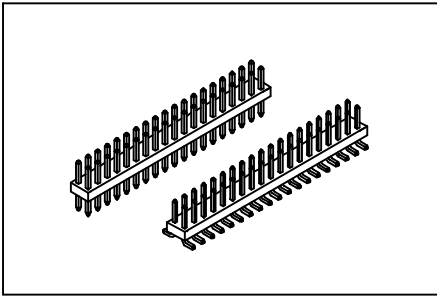


# Pin Header 1.27mmX1.27mm(0.050"X0.050")

# GXCON



### Features:

- \* Choice of through-hole and surface mount.
- \* Low profile 1.0mm(0.0395").
- \* Custom design offered.

### Material:

**Housing:** High temperature housing withstands IR and VPR soldering methods.

**Contacts:** Phosphor Bronze.

**Plating:** Gold plated over nickel.  
Tin plated over nickel.

### Electrical Characteristics:

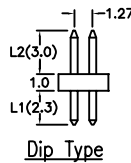
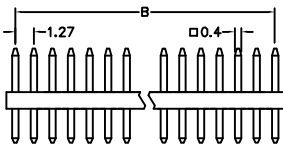
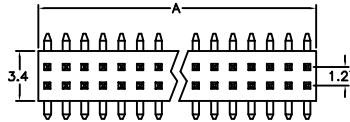
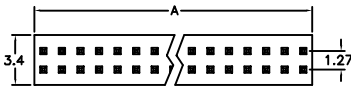
**Current Rating:** 1 AMP.

**Insulator Resistance:** 5000MΩmin. at DC 500V.

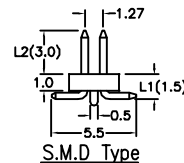
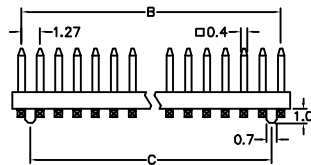
**Contact Resistance:** 20mΩmax. at DC 100mA.

**Operating Temperature:** -65°C~+125°C.

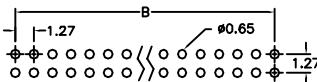
**Max Processing Temperature:** 230°C for 30~60 seconds.



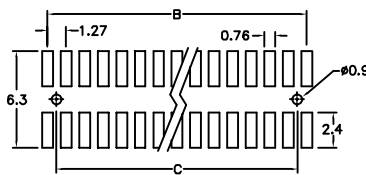
Dip Type



S.M.D Type



P.C. Board Layout



P.C. Board Layout

Position	6 Thru 80
Dimension	
A	.27 X No. of Positions /2
B	.27 X No. of Positions /2-1.27
C	.27 X (No. of Positions /2-2)

### Ordering information

PH25- 2 50 1 1 P /L1 /L2  
 Series Double Row No. of Pin Per Row 1: Gold Plated 2: Tin Plated 1: Straight 3: Surface Mount \*P: With Post \*N: Without Post

Custom Design: Straight (i.e. PH25-25011/L1 /L2)  
 Surface mount (i.e. PH25-23013P/L1/L2)